

Meeting Room Booking System

Recommended for offices looking for a maintenance-free room book solution.

OFFICE REQUIREMENTS

- Room booking via Outlook365, Exchange or Gmail
- Room Usage Analytics
- Signage at the door to indicate the availability of the room.
- Cost effective. Reliable.
- Maintenance free
- [Case Studies >>](#)

SYSTEM DESIGN

Equipment:

- [FootfallCam 3D Mini™](#) - Measure the occupancy of meeting rooms. ([Sample Floor Plans](#))
- [RoomTag™](#) - Display the room availability.
- [SpaceSense™](#) - Presence detector to reset the occupancy status.
- LoRa Gateway - Provides data connectivity for 3D Mini.

Deployment

- **3D Mini at the door** - ToF people counter. LoRa connectivity. 240V/100V AC Power.
- **RoomTag next to the door** - E-display, connect to 3D Mini via RS485, for power and data connectivity.
- **SpaceSense on the ceiling inside the room** - PiR sensor, connect to 3D Mini via RS485, for power and data connectivity.
- **LoRa Gateway** - One gateway per office building.
- [FootfallCam V9 Cloud](#) - Reporting Software

Installations:

- 3D Mini has 240V/100V AC Power - Qualified electricians connect to nearby mains power. Lower the cabling costs.
- RoomTag and SpaceSense - connects to 3D Mini for power and data networks.
- LoRa Gateway - 3D Mini upstreams data to the LoRa gateway.

Use Cases

Metrics:

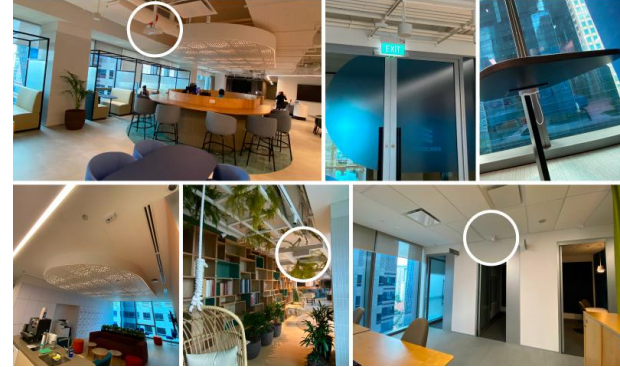
- % of Utilisation, Booked-No-Show, Showed-No-Book, Meeting Duration

Use Cases:

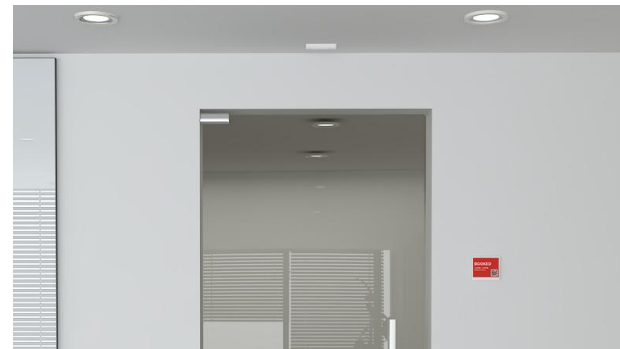
- **Employees:** Employees book the meeting room via the meeting invites of Outlook365, Exchange and Gmail.
- **Facility Manager:** To maximise the actual utilisation by reducing the number of booked-no-show. The busy hours data can be used for future office planning.
- [Explore more >>](#)

Maintainability:

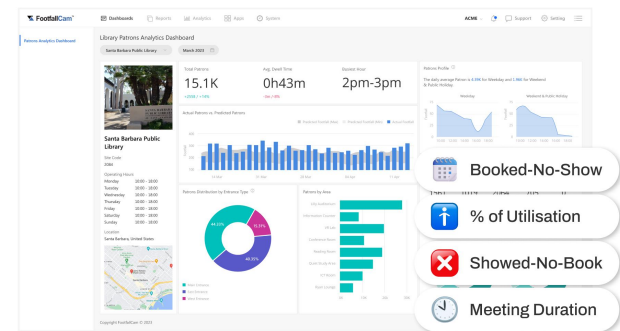
- Dedicated Account Manager
- Self Support: [Health Check](#), [Support Helpdesk](#)
- Support Contract: [Support Contract Template](#)
- [GDPR Compliant](#): No personal identifiable data collected.



Installed in over 1,000 offices around the world.



Flush mount Mini™ and RoomTag™



Meeting Room Usage Metrics

Seamless booking via Outlook365

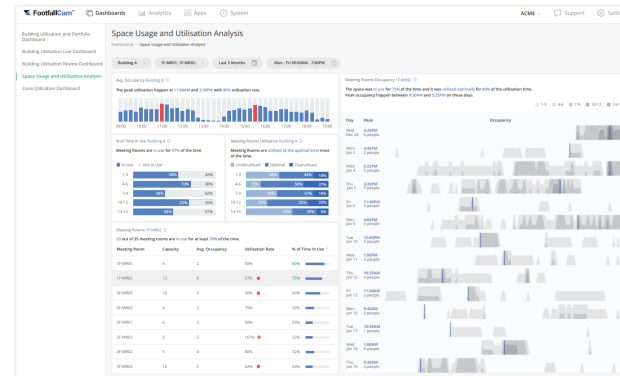
Integrations:

- Integrating with Outlook365, Exchange and Gmail
- 4x export methods: [Download or Email with Excel or CSV](#), [FTP](#), [PowerBI connectors](#), [custom API](#).

NEXT STEPS

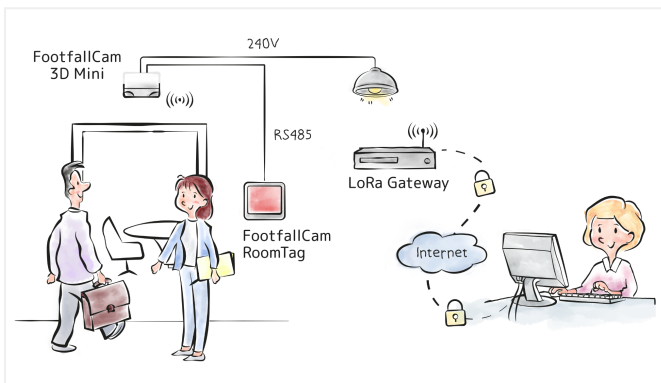
Buying Process:

- Trial for one meeting room to assess the full functionalities
- Define your Requirements - [Request for Proposal template](#)
- RFQ - [Request for Quotation template](#)

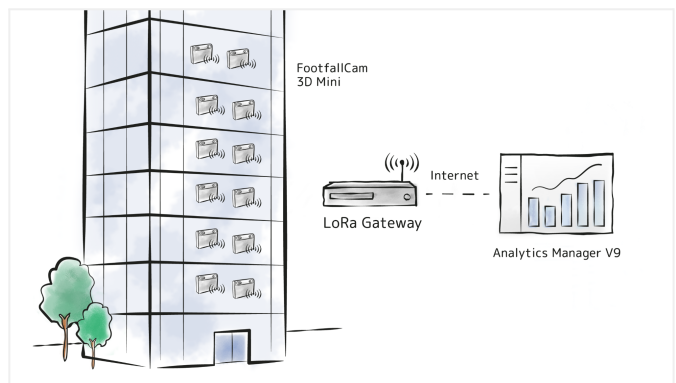


[Room Analytics Reports](#)

CONNECTIVITY



Conceptual wiring diagram for one meeting room.



LoRa Gateway to connect all meeting rooms.

Executive Summary

- ✓ Room booking via Outlook365, Exchange or Gmail - Seamless user experience.
- ✓ Comprehensive room booking analytics - Optimise room usage.
- ✓ Elegant aesthetic designs.
- ✓ Cost effective.
- ✓ Maintenance free.

References:

- FootfallCam for Office Powerpoint [Slides](#)
- FootfallCam 3D Mini People Counter [Datasheet](#)
- FootfallCam V9 Cloud [Datasheet](#)
- FootfallCam Room Tag [Datasheet](#)
- [GDPR compliance](#)
- [Service Level Agreement \(SLA\)](#)